

Piano Boxes

Heavily-Reinforced 16-Gauge Steel Construction

Four Piano Boxes Including High-Capacity 74" Long Model 689990

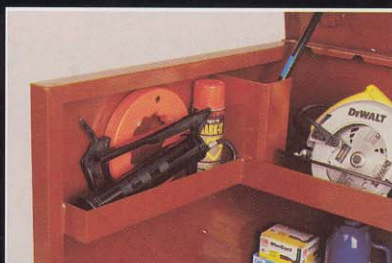


- Door and body reinforced for superior strength, rigidity and resistance to break-ins.
- Designed for improved resistance to dust and moisture to protect contents and interior from damage.

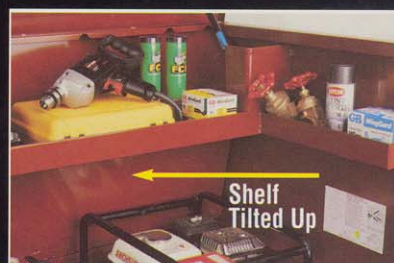
Flexible Storage



- **Two Shelves For Storing Heavy Items.** 12" wide, full-length heavy-duty shelves on back wall are extra-strong to hold heavy equipment or tools. Front lips are hemmed to add extra strength. Model 688990 has only one shelf.



- **Extra-Wide Storage Bins On Sides.** Small parts or tools storage bin is located on both side walls for convenience. One side is punched to hold screwdrivers, chisels and other long tools. Bins also reinforce side walls.

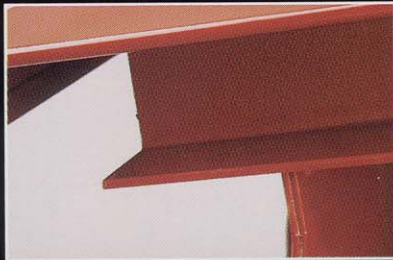


- **Hinged Tilt-N-Stow™ Shelf.** Supports up to 500 lbs. when lowered. Tilts up to gain nearly 12" of additional vertical storage space when needed for taller, bulky items. Not available on Model 688990.

Superior Security



■ **Door Reinforced For Security.** Deep, extra-wide bolsters on the door provide increased strength and rigidity. Doors are equipped with high-strength continuous hinges. Door offers superior security and resistance to break-ins.

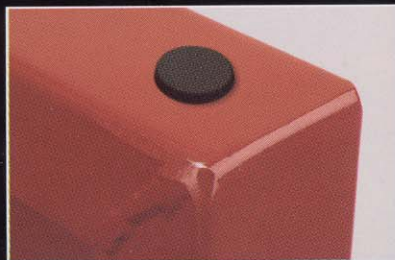


■ **Door Bottom Resists Break-Ins.** Extra heavy-duty 12-gauge flange on bottom of the door overlaps the front body top rail. Anchors door to protect contents from break-ins with pry bars or other tools.



■ **Bolt Cutter Free Locking System.** Padlock shackles are protected from cutting tools inside 12-gauge steel housings. Padlocks cannot be pried out or pulled out of the housing.

Rugged Durability



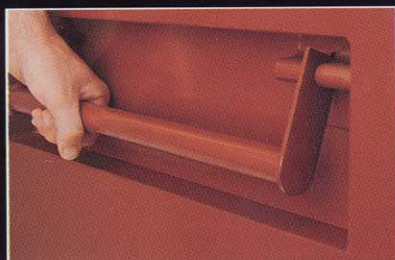
■ **Super Strong Side Wall Design.** Side walls reinforced with wide top flange and deep side flanges for superior strength and rigidity. Reinforcements add strength to maintain body shape and resist break-ins.



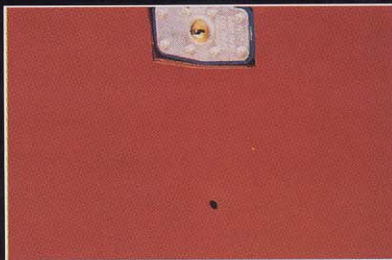
■ **High-Strength Top Rail For Security.** Extra-wide top rail has deep side flanges providing super-duty strength to resist break-ins with pry bars. Extra-strong top rail also resists damage for long-term use.



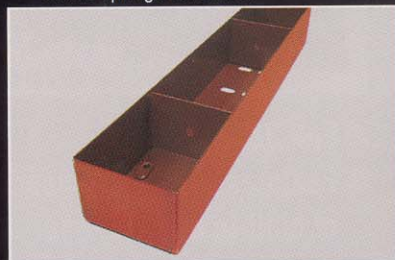
■ **Guard Protects Gas Springs.** Heavy-duty gas springs are protected surrounded by a guard to prevent damage. Springs assist in opening and closing door. Heavy-duty Quick Release hitch pins secure springs to bracket.



■ **Handle Recesses Help Reduce Injuries.** Extra tall and deep recess areas prevent pinched fingers when using lifting handles. Deep recesses protect handles from damage.



■ **Rain Drain™ System Protects Contents.** Wind driven rain entering the padlock housings is drained to the outside of the box. Channeling water away from the interior protects the contents and box from damage.



■ **Extra-Strong Bottom Bolsters* For Heavy Loads.** New bolster design provides the strength of 9-gauge laminated steel for twice the load-carrying capacity. Tall 3 3/8" forklift height.

*patent pending

Heavy-Duty Casters

Set includes a pair of fixed & a pair of swiveling casters.



MODEL	Size	Shipping Wt.
601040	4	15.0
602040	6	19.0

MODEL #	Description	L	W	H	Usable Cu. Ft.	Shipping Cu. Ft.	Shipping Wt. Lbs.
		Dimensions shown in inches.					
681990	Piano Box	48 7/8	31 11/32	49 1/2	38.0	48.2	272.0
682990	Piano Box	60	31 11/32	49 1/2	47.5	59.2	323.0
688990	Piano Box	60 7/8	30 1/8	37 11/16	34.4	44.8	260.0
689990	Piano Box	74 7/8	30 1/8	49 7/8	56.5	72.3	391.0